

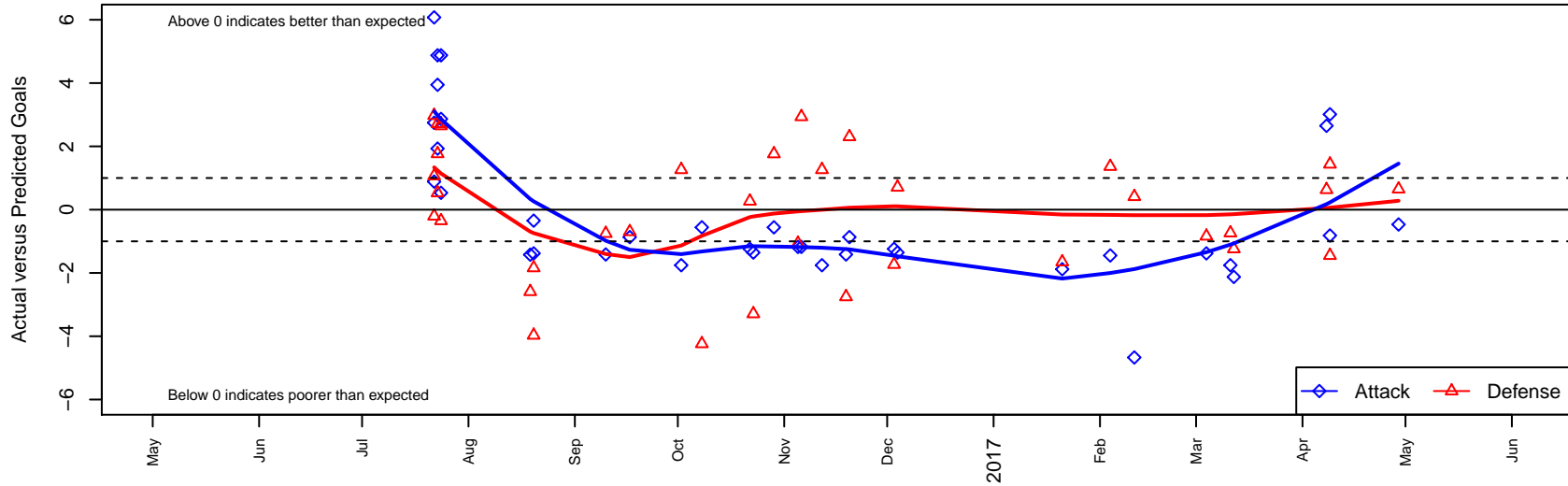
# Slammers White B06

Rainier Valley Slammers  
 Auburn, WA  
 B06 total strength=403  
 attack=0.35 defense=0.18  
 fall league = RCL B06 Div 4 9Aside  
 spr league = Win RCL B06 Div 5

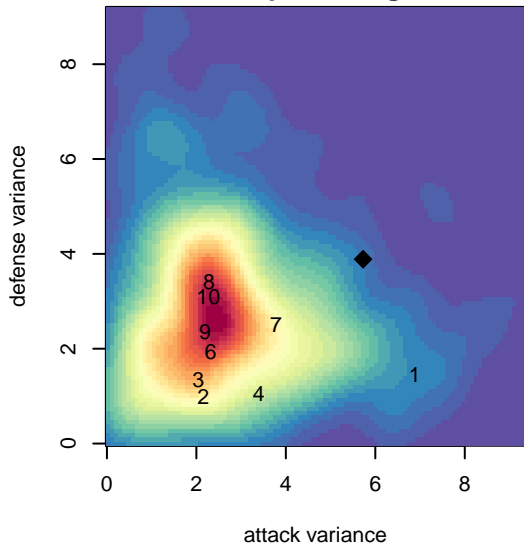
alt names used:  
 RVS B06 White  
 RVS B06 White  
 RVS B06 White  
 RVS B06 White  
 RAINIER VALLEY SLAMMERS B06 WHITE (W)

Venues played:  
 2016 Crossfire Select U11 Silver  
 2016 Crossfire Select U12 Silver  
 2016 Tye Cup B06 Silver  
 2016 RCL B06 Div 4 9Aside  
 2016 Win RCL B06 Div 5  
 2016 WA Cup U11 Bronze U11

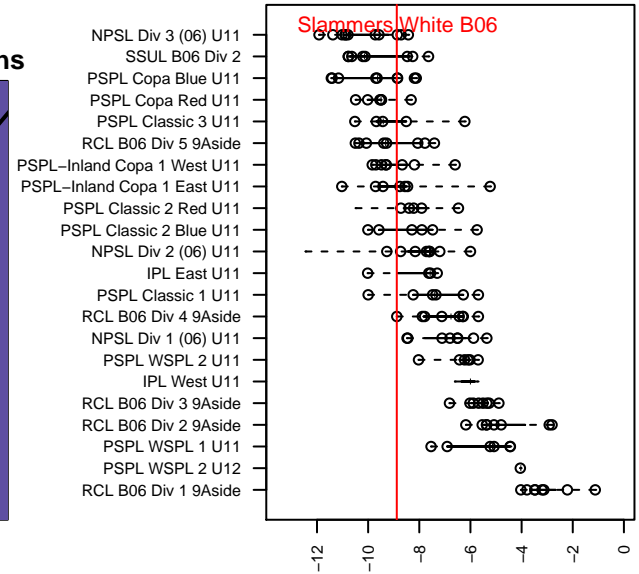
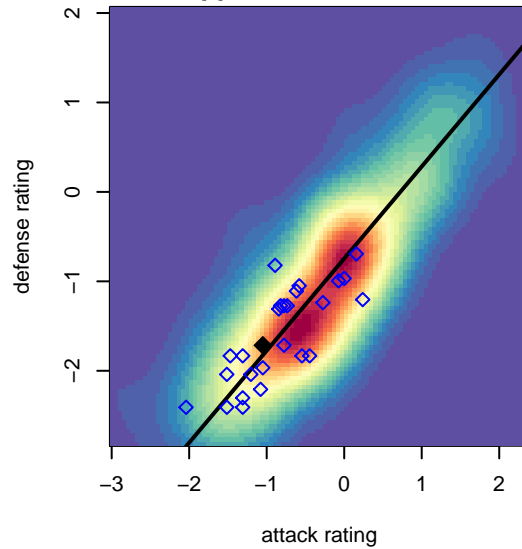
**Slammers White B06**  
 Dots are actual minus expected GF (blue circles) and GA (red triangles).  
 Blue line is smoothed change in attack strength. Red is smoothed change in defense strength.



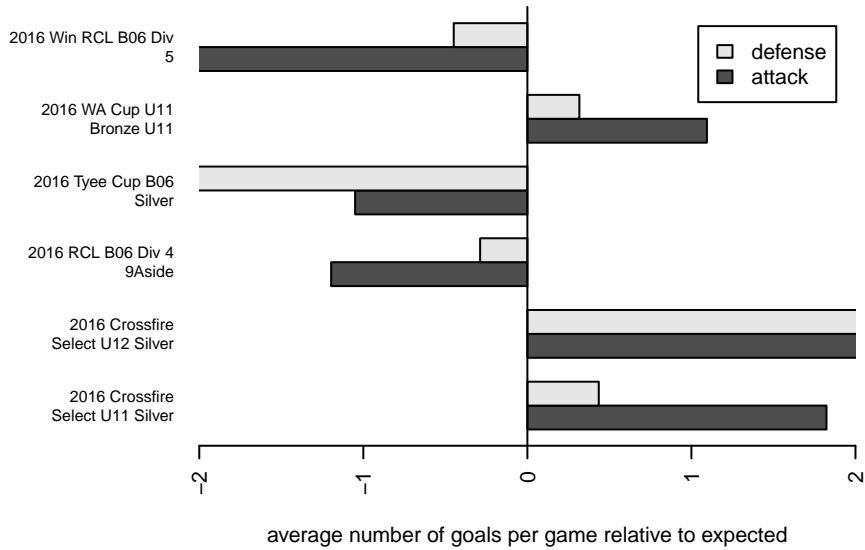
**attack and defense variance (black dot)  
relative to other teams  
and top 10 in region**



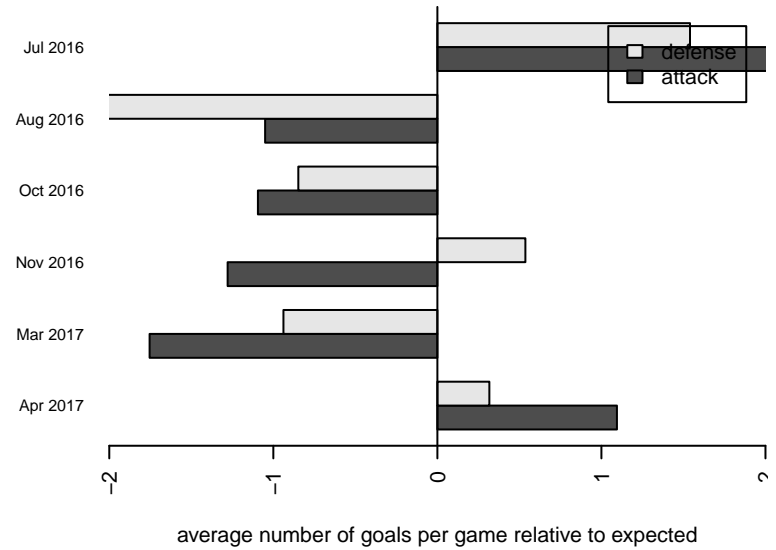
**attack and defense rating  
relative to others at age  
and all opponents in last 13 months**



**Performance relative to 13 month average**



**Performance relative to 13 month average**



| <b>date</b> | <b>home</b>               |    | <b>away</b>               |   | <b>venue</b>                     | <b>pred.home</b> | <b>pred.away</b> |
|-------------|---------------------------|----|---------------------------|---|----------------------------------|------------------|------------------|
| 2017-04-29  | Seattle Celtic Orange B06 | 3  | Slammers White B06        | 2 | 2016 WA Cup U11 Bronze U11       | 3.65             | 2.47             |
| 2017-04-09  | Slammers White B06        | 2  | ISC Gunners C B06         | 3 | 2016 WA Cup U11 Bronze U11       | 2.82             | 1.55             |
| 2017-04-09  | MVP Rapids White B06      | 0  | Slammers White B06        | 6 | 2016 WA Cup U11 Bronze U11       | 1.44             | 2.99             |
| 2017-04-08  | NPSA Titans Navy B06      | 2  | Slammers White B06        | 5 | 2016 WA Cup U11 Bronze U11       | 2.63             | 2.35             |
| 2017-03-12  | WA Rush Azul B06          | 3  | Slammers White B06        | 1 | 2016 Win RCL B06 Div 5           | 1.76             | 3.13             |
| 2017-03-11  | Slammers White B06        | 0  | FWFC White B06            | 3 | 2016 Win RCL B06 Div 5           | 1.76             | 2.26             |
| 2017-03-04  | PacNW Gold B06            | 2  | Slammers White B06        | 3 | 2016 Win RCL B06 Div 5           | 1.16             | 4.38             |
| 2017-02-11  | Slammers White B06        | 0  | Crossfire Premier F B06   | 1 | 2016 Win RCL B06 Div 5           | 4.67             | 1.41             |
| 2017-02-04  | Blackhills FC Red B06     | 0  | Slammers White B06        | 3 | 2016 Win RCL B06 Div 5           | 1.36             | 4.45             |
| 2017-01-21  | Slammers White B06        | 1  | GS Surf E B06             | 3 | 2016 Win RCL B06 Div 5           | 2.88             | 1.35             |
| 2016-12-04  | Slammers White B06        | 0  | Crossfire Premier D B06   | 6 | 2016 RCL B06 Div 4 9Aside        | 1.36             | 6.71             |
| 2016-12-03  | Slammers White B06        | 0  | PacNW White B06           | 7 | 2016 RCL B06 Div 4 9Aside        | 1.24             | 5.27             |
| 2016-11-20  | Slammers White B06        | 0  | Seattle United Samba B06  | 4 | 2016 RCL B06 Div 4 9Aside        | 0.87             | 6.30             |
| 2016-11-19  | Slammers White B06        | 0  | Eastside FC Blue B06      | 7 | 2016 RCL B06 Div 4 9Aside        | 1.42             | 4.25             |
| 2016-11-12  | FWFC White B06            | 1  | Slammers White B06        | 0 | 2016 RCL B06 Div 4 9Aside        | 2.26             | 1.76             |
| 2016-11-06  | Slammers White B06        | 0  | NW United Black B06       | 2 | 2016 RCL B06 Div 4 9Aside        | 1.18             | 4.94             |
| 2016-11-05  | NW United Black B06       | 6  | Slammers White B06        | 0 | 2016 RCL B06 Div 4 9Aside        | 4.94             | 1.18             |
| 2016-10-29  | Slammers White B06        | 1  | GS Surf D B06             | 1 | 2016 RCL B06 Div 4 9Aside        | 1.56             | 2.76             |
| 2016-10-23  | Crossfire Premier D B06   | 10 | Slammers White B06        | 0 | 2016 RCL B06 Div 4 9Aside        | 6.71             | 1.36             |
| 2016-10-22  | PacNW White B06           | 5  | Slammers White B06        | 0 | 2016 RCL B06 Div 4 9Aside        | 5.27             | 1.24             |
| 2016-10-08  | GS Surf D B06             | 7  | Slammers White B06        | 1 | 2016 RCL B06 Div 4 9Aside        | 2.76             | 1.56             |
| 2016-10-02  | Slammers White B06        | 0  | FWFC White B06            | 1 | 2016 RCL B06 Div 4 9Aside        | 1.76             | 2.26             |
| 2016-09-17  | Seattle United Samba B06  | 7  | Slammers White B06        | 0 | 2016 RCL B06 Div 4 9Aside        | 6.30             | 0.87             |
| 2016-09-10  | Eastside FC Blue B06      | 5  | Slammers White B06        | 0 | 2016 RCL B06 Div 4 9Aside        | 4.25             | 1.42             |
| 2016-08-20  | Harbor Premier White B06  | 7  | Slammers White B06        | 1 | 2016 Tye Cup B06 Silver          | 3.03             | 1.35             |
| 2016-08-20  | PacNW Gold B06            | 3  | Slammers White B06        | 3 | 2016 Tye Cup B06 Silver          | 1.16             | 4.38             |
| 2016-08-19  | Slammers White B06        | 0  | Tacoma United – Unk B06   | 5 | 2016 Tye Cup B06 Silver          | 1.42             | 2.41             |
| 2016-07-24  | Slammers White B06        | 3  | Seattle Celtic Orange B06 | 4 | 2016 Crossfire Select U11 Silver | 2.47             | 3.65             |

| <b>date</b> | <b>home</b>               |   | <b>away</b>                  |   | <b>venue</b>                     | <b>pred.home</b> | <b>pred.away</b> |
|-------------|---------------------------|---|------------------------------|---|----------------------------------|------------------|------------------|
| 2016-07-24  | Seattle Celtic Orange B05 | 0 | Slammers White B06           | 4 | 2016 Crossfire Select U12 Silver | 2.65             | 1.13             |
| 2016-07-24  | Slammers White B06        | 8 | Crossfire Select Pedraza B05 | 0 | 2016 Crossfire Select U12 Silver | 3.12             | 2.72             |
| 2016-07-23  | Cascade FC White B06      | 0 | Slammers White B06           | 7 | 2016 Crossfire Select U11 Silver | 0.53             | 5.07             |
| 2016-07-23  | ISC Gunners Select B06    | 0 | Slammers White B06           | 8 | 2016 Crossfire Select U11 Silver | 1.77             | 4.05             |
| 2016-07-23  | Slammers White B06        | 8 | Crossfire Select Pedraza B05 | 0 | 2016 Crossfire Select U12 Silver | 3.12             | 2.72             |
| 2016-07-22  | Slammers White B06        | 4 | Crossfire Select Sneider B06 | 2 | 2016 Crossfire Select U11 Silver | 3.11             | 1.79             |
| 2016-07-22  | Cascade FC Green B05      | 1 | Slammers White B06           | 8 | 2016 Crossfire Select U12 Silver | 2.06             | 1.92             |
| 2016-07-22  | Slammers White B06        | 4 | NSC Synergy White B05        | 0 | 2016 Crossfire Select U12 Silver | 1.25             | 2.97             |